

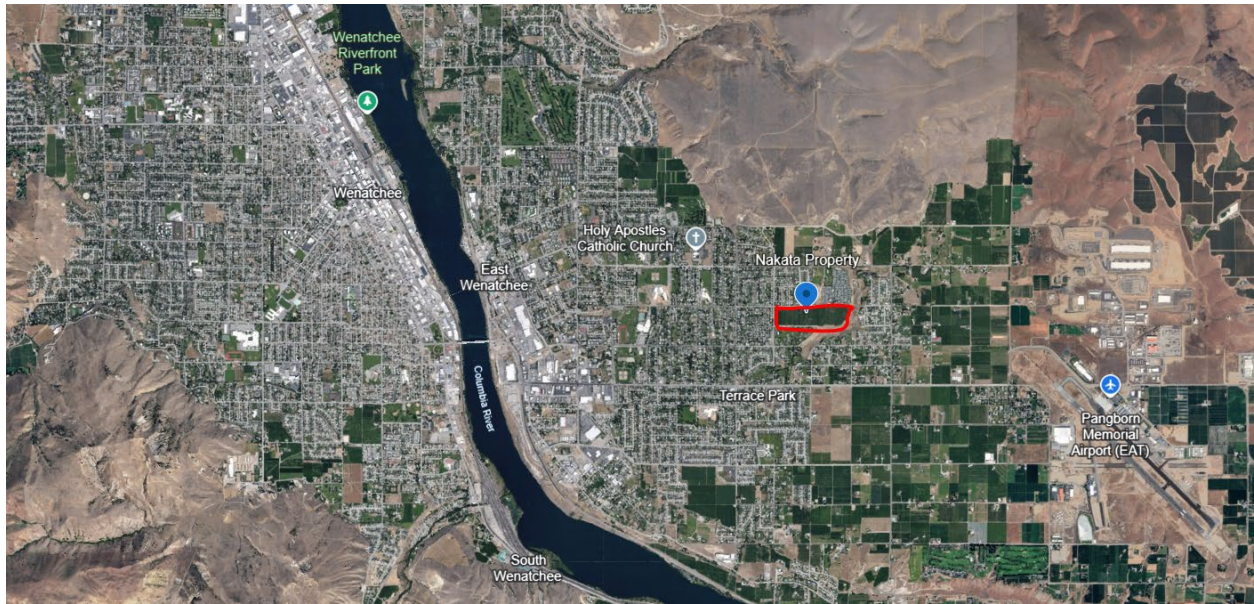
Location: RiverCom Property – N Lyle Ave and 5<sup>th</sup> St NE - Douglas County Parcel #22210730011  
Project: RiverCom 911  
Date: February 14<sup>th</sup>, 2025

#### PROJECT DESCRIPTION

- RiverCom is a two-county, multi-jurisdictional designated Public Safety Answering Point (PSAP) that provides 911 call-taking and emergency services dispatch services for law enforcement, fire districts and departments, public and private ambulance services, and emergency management response and recovery operations in Chelan and Douglas counties. Emergency communications are at the core of RiverCom’s mission, which started operations in July 2004. 911 operations are staffed 24 hours a day, 7 days a week.
- The project site is the property located at the intersections of N Lyle Ave and 5th St NE. (RiverCom acquired the project site, a 12-acre parcel, with the intent of going through the exempt segregation process to divide the site up and only occupy 5 acres). The project scope includes construction of a new +/-18,000 sq ft building to accommodate a 24/7/365 911 Dispatch Facility.
- Site improvements/site development of a greenfield site to include: grading, curb cuts, parking (public and secure/employee), landscaping, fencing, and other hardening/security measures. Site features will include a radio tower, emergency generator(s), exterior program area, etc.
- Site improvements/site development of a greenfield site to include: grading, curb cuts, parking (public and secure/employee), landscaping, fencing, and other hardening/security measures. Site features will include a radio tower, emergency generator(s), exterior program area, etc.
- Street frontage improvements are anticipated, to include: left turn lane/pocket, widening, curb, sidewalk, illumination, etc.

#### SCOPE OF SERVICES

1. Geotechnical Engineering:
  - a. Provide description of general site conditions (location, geological description, general soil conditions, results of all laboratory investigations and tests, identification of site class, identification of potential geological and seismic hazards, etc.)
  - b. Provide foundation recommendations; general and for shallow foundations.
  - c. Provide site specific ground motions and site-specific response spectra.
  - d. Assume (4) borings to a depth of 20-25 feet, in locations to be determined.
  - e. Provide a minimum of (2) two infiltration test pits, in locations to be determined.
2. Deliverables:
  - a. A geotechnical engineering report will be prepared containing the results of the work, including the following information:
    - i. Exploration and sampling methods and equipment
    - ii. A site exploration plan drawn to scale with north arrow and boring (or test pit) locations and identification
    - iii. Exploration logs including groundwater depth, if encountered
    - iv. Laboratory test results
    - v. Infiltration test results
    - vi. Groundwater considerations
    - vii. Liquefaction potential



*Figure 1-RiverCom Property (property lines not to scale)*

For any questions regarding this project and scope of work please reach out to the construction management team:

Rob Gross – Project Manager: [rob.gross@turntown.com](mailto:rob.gross@turntown.com)

John Minder – Construction Manager: [john.minder@turntown.com](mailto:john.minder@turntown.com)